

Introduction

Microsoft Dynamics™ AX is an open source business application that covers a large amount of functions. These include Financials, CRM, SRM, Workflow, Purchasing, Manufacturing, Preventative maintenance and much more.

Where it is needed to go beyond the boundaries of Dynamics Ax it is suggested that partners and customers to use of **SIM** (Software Interface Module) for **Microsoft Dynamics™ AX**. SIM attempts to standardize on interfaces to and from Ax. It is a database level integration tool that operates from with **Dynamics™ AX**

The current application of SIM includes Symplexity HR/Payroll. It is envisaged that it will be used to interface Ax with On Key from Pragma and Labware LIMS. These are referred to us:

- A2L – Ax to Labware LIMS
- A2S – Ax to Symplexity
- A2P – Ax to Pragma
- A2M – Ax to PIMS
- A2V – Ax to VIP

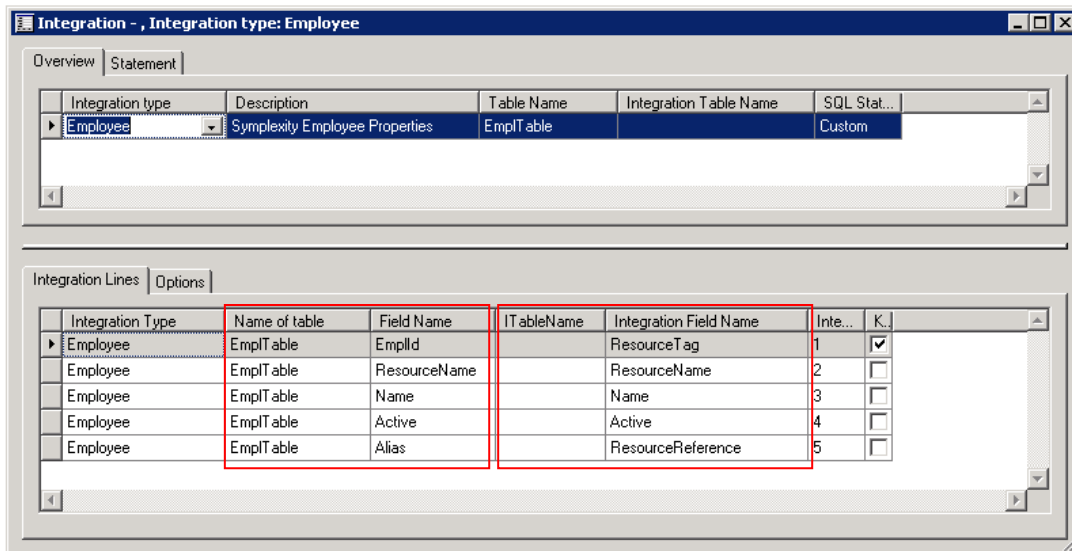
Key Benefits:

- Visibility of asset life cycle
- Reduce spare parts/Inventory costs
- Ensure less asset/equipment down time
- Better control over maintenance WIP
- More effective maintenance program increase safety
- No duplication of master or transaction data

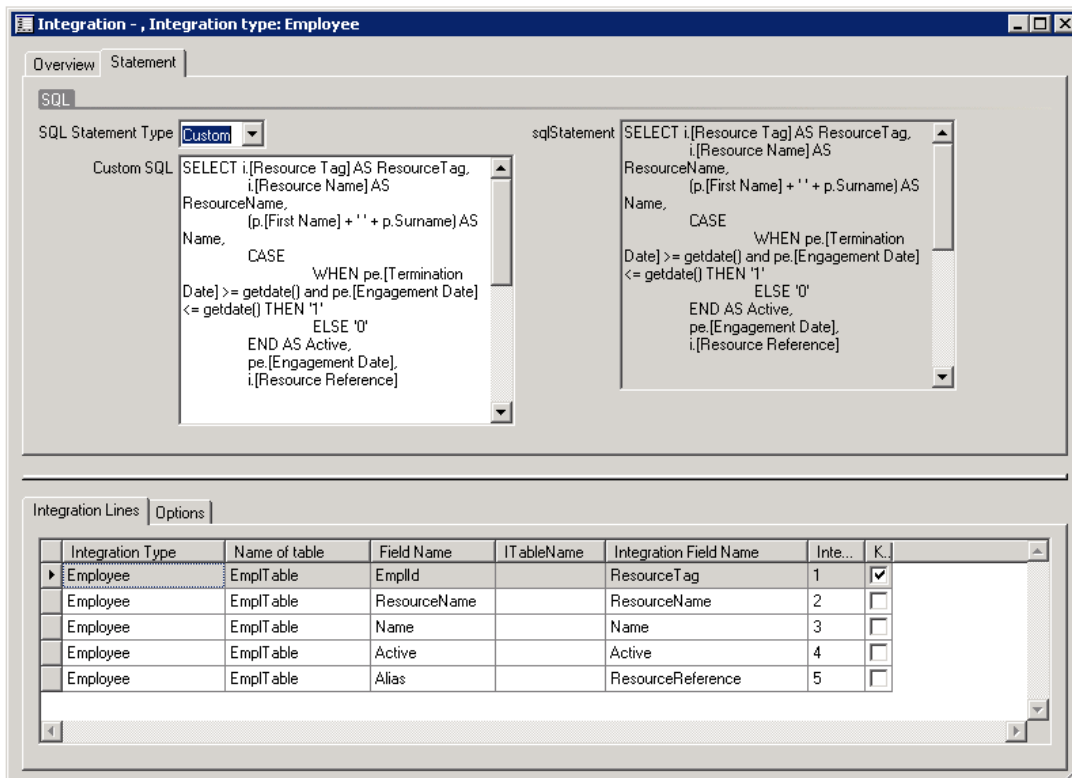
Functions and Features

The 5 principles of SIM

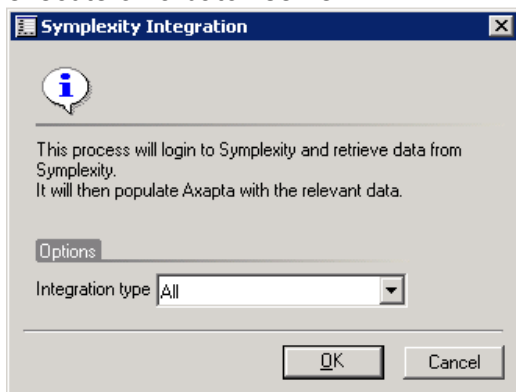
Firstly, integration points are identified. These are created in **Microsoft Dynamics™ AX**. These integration points are used and a mapping is done against these integration points. This mapping maps the external table fields to a corresponding table inside Ax.



Secondly a T-SQL statement is linked to each integration point. These SQL statements are used when the actual integration job is executed.



Thirdly an “integration execution” dialog box is used. This “integration execution” can also be scheduled to execute on a batch server



Fourthly, with the relevant data in Ax, populated from an external source Ax can now use this data accordingly. E.g. with the Symplexity interface information in the “SymGLITtable” is used to automatically create GL journal entries for the payroll.

Finally, depending on the 3rd party application being interfaced with, it is possible to write data from **Microsoft Dynamics™ AX** into tables of the 3rd party application.

Conclusion

The fact that you don’t have the data to perform the above may be a hint that your company needs an integrated SAM solution.

SAM for Microsoft Dynamics™ AX from Thy:data offers a compelling, better integrated and reasonably priced option for enterprises looking for an integrated ERP and SAM solution.

Benefits

The following benefits will be obtained from using **SAM for Microsoft Dynamics™ AX** in a disciplined manner:

- prepare a more accurate budget
- spreading maintenance dollars to more critical assets
- visibility as to what is not getting done via a backlog report
- correlation between the preventive maintenance and asset downtime
- plants are safer because maintenance work gets done properly and reliably
- allows you to evaluate the effectiveness of your preventive maintenance program
- an integrated ERP/SAM solution as above from Microsoft and Thy:data translates into:

The trademarks Microsoft, Microsoft Dynamics™ AX, Windows NT, SQL Server and SharePoint are either registered trademarks or trademarks of Microsoft Corporation in the United States and/or other countries.

SIM is an Axnosis product www.axnosis.com